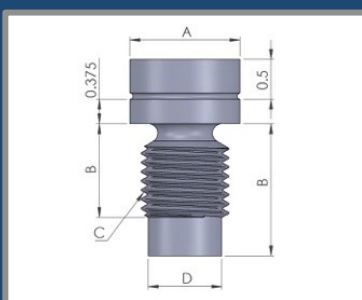
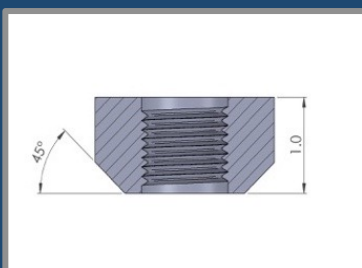
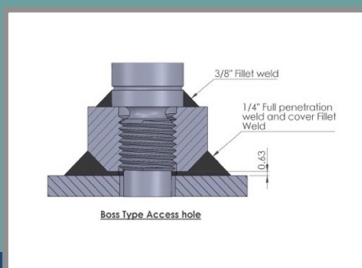
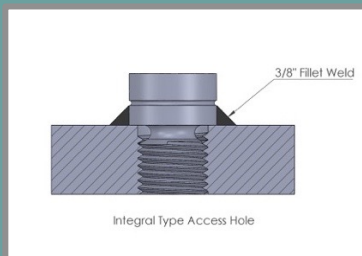




We Specialise In Hard To Find Materials



GAMMA PLUGS

Gamma Plugs or X-Ray Plugs Available in a Large Range of Material Specifications Including:

ASTM / ASME

- **Carbon Steel:** A105
- **Low Temp Steel:** A350 - LF2
- **Chrome Moly:** A182 - F1, F2, F5, F9, F11, F12, F22, F91
- **Stainless Steel:** A304, 316, 317, 321, 347 etc.
- **Duplex Stainless Steel:** A182 - F51, F53, F55 etc.
- **Inconel:** A601, 625, 825 etc

Other material available on request.

Boss Type Access Hole or Integral Type Access Hole

PIPE WALL THICKNESS	RADIOGRAPHIC PLUG AND BOSS					
	< 5/8" without boss	< 5/8" with boss	5/8" ≥ 1-3/8"	1-3/8" ≥ 3"	3" ≥ 5"	> 5"
STYLE	1	2	1	2	2	2
A	1.250	1.250	1.250	1.250	1.500	2.000
B	-	1.000	-	1.250	1.500	2.000
C	1" - 8 UNC - 3A	1" - 8 UNC - 3A	1" - 8 UNC - 3A	1" - 8 UNC - 3A	1 1/2" - 6 UNC - 3A	2" - 4 1/2" UNC - 3A
D	-	0.812	-	0.812	1.234	1.656
H	0.625					



AIR-FREIGHT OR SEA-FREIGHT
INTERNATIONALLY TO MOST COUNTRIES

Perth - Australia
Tel: 61 (0)8 9445 1355
Fax: 61 (0)8 9445 1377
sales@appliedalloys.com.au

Singapore
Tel: +65 6809 5388
Fax: +656822 3362
sales@appliedalloys.com.sg

Hokkaido - Japan
携帯: +81 (0)80 4048 0899
ファクス: +81(0)136233206
sales@appliedalloys.jp

APPLIED ALLOYS INTERNATIONAL - ICON VALVES AUSTRALIA